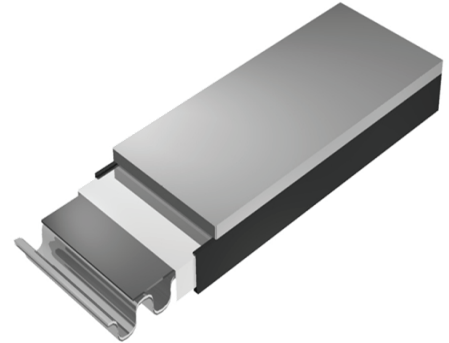


Quanex

building products
Insulating Glass Systems

Duraseal®

Duraseal is an insulating glass edge seal system constructed using a unique Composite Laminating Technology. Duraseal is preassembled with proven components, sealant, spacer and desiccant to create a high performance durable single seal spacer system.



Basic Use

For use in high-volume production of dual and triple pane insulating glass units in a one-step process where units are sealed using heat and compression. Designed as a single seal system, Duraseal can also be used with a secondary sealant to create a dual seal unit.

Colors

Duraseal is available in gray and black.

Sizes

Airspaces of 1/4" (6mm) to 13/16" (21 mm).
In increments of .021" (0.53 cm).

Packaging

Returnable/recyclable spools available in disposable packaging.

Shelf Life

One year in unopened containers at storage conditions below 77° F (25° C). Surface imprinted with manufacture date.

Technical Services

Your Quanex Building Products Representative, in conjunction with your Quanex Building Products Technical Service Group, can provide in-plant training and assistance with special applications.

Availability/Cost

Availability and cost can be obtained from your local Quanex Representative or by calling our Customer Service Center. For more information, call Quanex/Truseal: in the U.S. 888-910-5280; in Canada 888-794-4453.

Performance	Norm
Thermal Conductance (Klin) 0.32 W/m° C based on 1/2" (13mm) spacer	
Moisture Vapor Transmission Rate 0.09 g H ₂ O/m ² per 24 hrs.	ASTM F 1249
Volatile Fogging Passes	ASTM E 2189 CGSB 12.8
Argon Permeance 6-8 c.c./100 in. ² per 24 hrs.	ASTM D 1434
Bondline Adhesive UV Resistance Excellent	
Dew Point Development -20° F (-29° C) in 48 hrs	ASTM E 546
Tensile Strength 50 psi	TST 389C
Note: The foregoing information is published as general information only. The listed properties and performance characteristics are approximate value and are not part of the product specification.	

Glazing Compatibility and Design Recommendations

In general, materials such as hot-applied sealants, silicones, glazing tapes and solvent acrylics are compatible. Refer to Technical Bulletin SG003 at www.Quanex.com for a list of approved glazing materials or inquire about compatibility testing. Fabricated units shall be glazed in accordance with GANA (Glass Association of North America) and IGMA (Insulating Glass Manufacturers Alliance) recommendations. Please check with your Quanex Representative for specific glazing recommendations.

Storage Conditions

Store in original airtight container. Expose to air only during application. Procedures for opening and resealing Duraseal containers should be followed as outlined in Technical Bulletin IG019 available at www.Quanex.com.

Health & Safety

For all Quanex products, and for other product used in conjunction with Quanex products, users must follow individual product labels and Material Safety Data Sheets for warnings and precautions prior to opening containers and during use and storage.

Environmental Conditions

Non-hazardous under normal use for handling and waste disposal.

Warranty

See Truseal warranty certificate.

Duraseal® is a registered trademark of Truseal Technologies, Inc.

Quanex recommends you visit www.Quanex.com and register to ensure you have the most current updates to this data and all other Quanex sales and technical materials.

Key Features Summary

- Composite Laminating Technology
- A unique patented design
- Smooth surface appearance
- Black or gray sightline available
- Proven adhesive technology
- Superior argon gas retention
- Minimal compression required
- Optimized packaging
- Low conductivity warm-edge spacer
- Improved condensation resistance
- Warmer edge of glass temperature

Certification Standards

- EN 1279:2002 Part 2, 3, 4, Part 6 B & C
- CGSB 12.8
- ASTM E 2190 (HIGS)
- GOST 24866-99



Quanex warm-edge IG spacer systems are used by our customers to assemble ENERGY STAR® qualified windows and doors.



ISO 9001:2008,
Certificate Registration 10001512 QM08